

# MONTHLY MEMBERSHIP PROGRESS REPORT

LOCATION SASKATCHEWAN

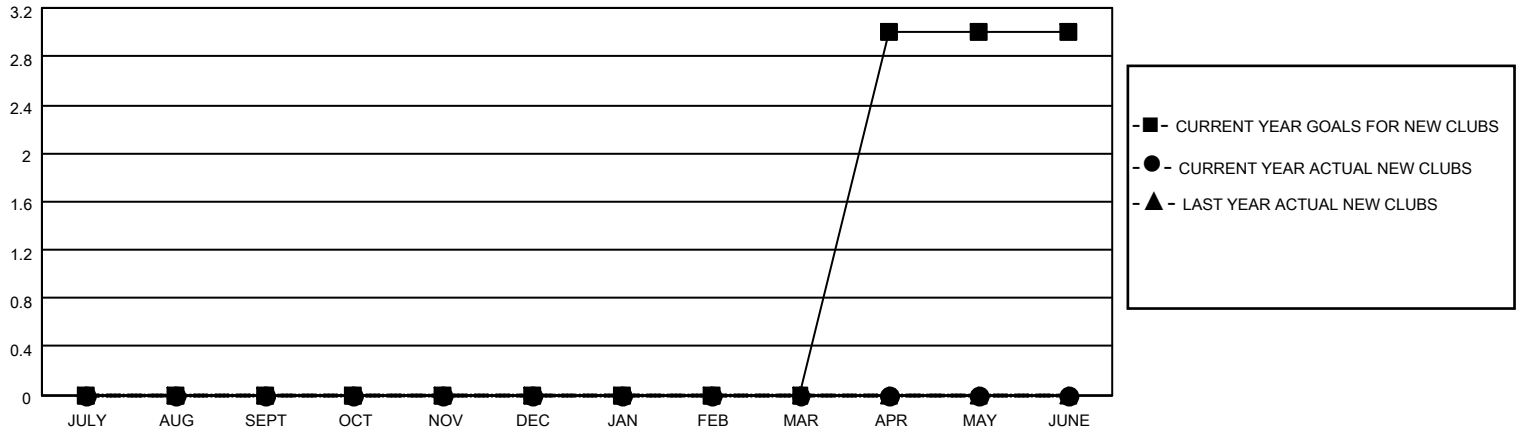
District 5 SKN

Results as of: 5/31/2022

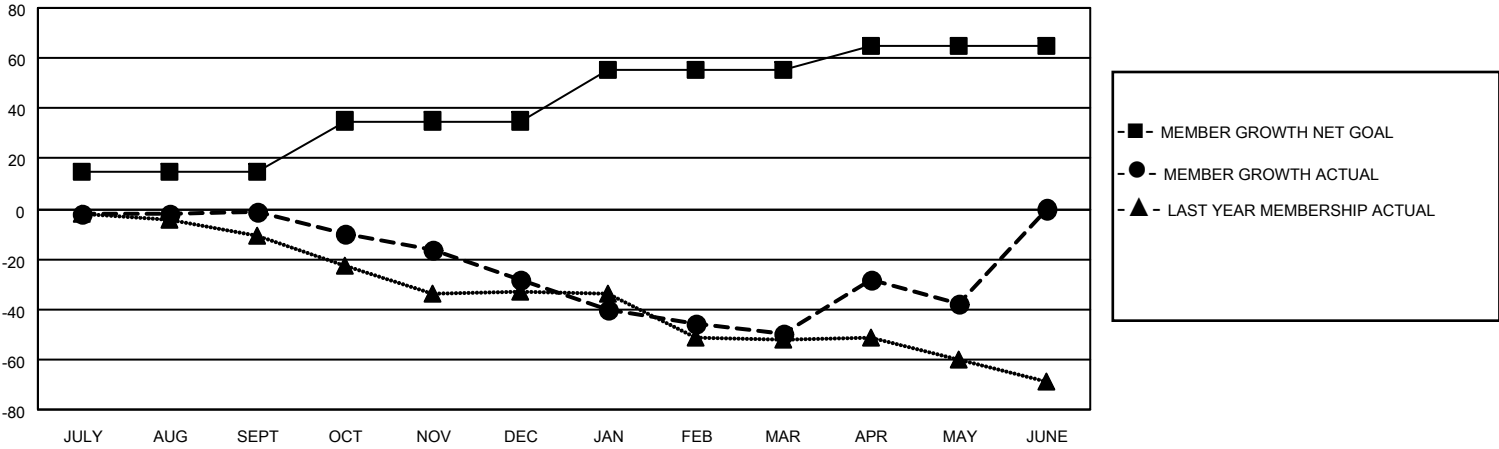
Clubs			
RESULTS FOR 2021-2022			
QUARTER	NEW CLUB GOAL	NEW CLUBS	DROPPED CLUBS
JULY/AUG/SEPT	0	0	0
OCT/NOV/DEC	0	0	0
JAN/FEB/MAR	0	0	2
APR/MAY/JUNE	3	0	0

Members			
RESULTS FOR 2021-2022			
QUARTER	MEMBER GROWTH NET GOAL	MEMBER GROWTH ACTUAL	DROPPED MEMBERS ACTUAL (including transfers)
JULY/AUG/SEPT	15	5	6
OCT/NOV/DEC	20	17	43
JAN/FEB/MAR	20	19	41
APR/MAY/JUNE	10	34	19

**GOALS AND ACTUAL NEW CLUBS CUMULATIVE**



**GOALS AND ACTUAL MEMBERS CUMULATIVE**



**DROPPED CLUBS: 2**

**20 CLUBS OF 56 ADDED 1 OR MORE NEW MEMBERS**

**GENDER DISTRIBUTION**

MALE	746 (72.50%)
FEMALE	283 (27.50%)
NON BINARY	0 (0.00%)
PREFER NOT TO ANSWER	0 (0.00%)

**DROPPED MEMBERS**

[CLICK HERE FOR CUMULATIVE MEMBERSHIP DATA](#)

DECEASED	18
CLUB CANCELLED	10
OTHER	81
<b>TOTAL</b>	<b>109</b>

TOTAL FAMILY UNIT MEMBERS	215
FAMILY MEMBERS PAYING HALF DUES	109